

# Performance of NSW VET programs: monthly report

**June 2016**

Published by the Department of Industry, Skills and Regional Development. First published April 2016.

---

© State of New South Wales through Department of Industry, Skills and Regional Development 2016

This publication is copyright. You may download, display, print and reproduce this material provided that the wording is reproduced exactly, the source is acknowledged, and the copyright, update address and disclaimer notice are retained. To copy, adapt, publish, distribute or commercialise any of this publication you will need to seek permission from the Department of Industry, Skills and Regional Development.

Disclaimer: The information contained in this publication is based on knowledge and understanding at the time of writing (June 2016). However, because of advances in knowledge, users are reminded of the need to ensure that the information upon which they rely is up to date and to check the currency of the information with the appropriate officer of the Department of Industry, Skills and Regional Development or the user's independent advisor.

---

# Contents

<b>About this report</b>	<b>4</b>
<b>National VET activity data</b>	
<b>VET activity data from NCVET</b> .....	<b>5</b>
Enrolments by qualification level .....	5
<b>Performance of NSW VET programs</b>	
<b>Aboriginal programs and services</b> .....	<b>7</b>
Elsa Dixon Aboriginal Employment Program .....	7
Aboriginal Enterprise Development Officer Program .....	8
New Careers for Aboriginal People Program .....	8
The Way Ahead for Aboriginal People Program .....	8
<b>Adult and Community Education programs</b> .....	<b>9</b>
Qualification enrolments by funding source .....	9
Subject-only enrolments by funding source .....	10
Community service obligations funded enrolments in qualifications .....	11
CSO-funded students doing qualifications .....	11
CSO-funded subject-only enrolments .....	13
CSO-funded students doing subjects only .....	14
<b>Apprenticeships and traineeships</b> .....	<b>15</b>
Training contract approvals for apprenticeships and traineeships .....	15
Top five apprenticeships and traineeships by training contract approvals .....	18
Apprentices and trainees in training .....	19
Training contract completion rates for apprenticeships and traineeships .....	19
Bert Evans Apprentice Scholarships .....	20
<b>Smart and Skilled Program</b> .....	<b>21</b>
Enrolments .....	21
Students .....	24
Smart and Skilled training providers .....	26
Top 10 qualifications .....	27
Fee-Free Scholarships .....	28
<b>Glossary</b>	<b>30</b>
<b>NSW training regions</b>	<b>33</b>

## About this Report

This is a monthly report on the performance of NSW vocational education and training (VET) programs and follows the introduction of the NSW Government's Smart and Skilled reform in January 2015. The Department of Industry, Skills and Regional Development publishes this report regularly in line with the NSW Government's commitment to transparency.

The completeness of the report's data and information will improve over time as training providers adjust to new reporting requirements.

When interpreting the report's data care must be taken because:

- There are overlaps between different data sets (e.g. apprenticeship data appears in both the Apprenticeship and Traineeship section, and in the Smart and Skilled section (please see contents for page locations).
- Data may have breaks or adjustments in the time series.
- Some data relates to the year to date (YTD) and previous YTD, but other data may relate to a calendar or financial year.

The Glossary explains terms the report uses and a map of training regions please see the table of contents for its location.

The National VET Activity Data section replicates tables from two key national collections of VET data compiled by the National Centre for Vocational Education Research (NCVER) that show the number of NSW Government-funded enrolments and the total VET activity in the state.

# National VET activity data

The National Centre for Vocational Education Research (NCVER) is responsible for collecting, managing, analysing, evaluating and communicating research and statistics about vocational education and training (VET) nationally on behalf of the Commonwealth and state and territory ministers responsible for VET.

## VET activity data from NCVER

### Sources:

- NCVER, VOCSTATS, Government-funded students and courses, accessed in June 2016.
- NCVER, 2015, Australian vocational education and training statistics: Total VET students and courses 2014, Adelaide.

## Enrolments by qualification level

### NSW Government-funded enrolments

Table 1 NSW Government-funded enrolments by qualification level (calendar year)<sup>1</sup>

Qualification level	2015	2014	2013	2012
Diploma and above	24,849	39,927	42,046	52,105
Certificate IV	43,066	64,016	67,510	76,437
Certificate III	131,630	158,419	166,400	161,904
Certificate II	87,652	111,154	119,543	130,518
Certificate I	18,442	24,656	24,063	29,854
Non-AQF qualification	47,286	63,622	75,917	88,332
<b>Total</b>	<b>352,925</b>	<b>461,794</b>	<b>495,479</b>	<b>539,150</b>

<sup>1</sup> Government-funded activity is classified as 'NSW' by the funding body.

# Total NSW VET Activity

Total NSW VET activity is an estimate of all accredited VET training activity in NSW in 2014 – it includes government-subsidised training and fee-for-service training. NCVET commented that the publication of this data for the first time in 2015 was affected by incompleteness because 2014 was a transition year.

Source: NCVET

**Table 2 Total NSW VET activity by qualification level (2014 and 2015 calendar year)<sup>1</sup>**

Qualification level	2015	2014
Diploma and above	256,019	182,737
Certificate IV	150,813	152,322
Certificate III	231,644	245,201
Certificate II	173,367	204,573
Certificate I	37,681	34,025
Non-AQF qualification	170,539	190,836
<b>Total</b>	<b>1,020,063</b>	<b>1,009,694</b>

<sup>1</sup> Total VET activity is classified as 'NSW' by delivery location.

# Performance of NSW VET programs

## Aboriginal programs and services

### Elsa Dixon Aboriginal Employment Program

The Elsa Dixon Aboriginal Employment Program provides funding on a financial year basis to organisations to support Aboriginal education, employment and training by:

- subsidising the salary, development and support costs of Aboriginal employees in a public service agency or local council
- funding innovative community projects
- supporting work experience for Aboriginal students in their final year of a degree or post-degree course.

**Table 3** NSW Government-sector positions funded by the Elsa Dixon Aboriginal Employment Program by financial year

Position funded	2015–16 <sup>1</sup>	2014–15
Graduate position	-	3
Permanent position	-	6
School-based position	117	97
Temporary position	-	17
<b>Total</b>	<b>117</b>	<b>123</b>

**Table 4** Partnerships funded by the Elsa Dixon Aboriginal Employment Program by financial year

Position funded	2015–16 <sup>1</sup>	2014–15
Partnerships	--	2

<sup>1</sup> The period covered is from 1 July 2015 to 30 June 2016.

## Aboriginal programs and services

### Aboriginal Enterprise Development Officer Program

The Aboriginal Enterprise Development Officer (AEDO) Program is a free program for Aboriginal people considering starting up their own business or expanding their current business.

**Table 5 Outcomes for the Aboriginal Enterprise Development Officer Program by financial year**

	2015–16 <sup>1</sup>	2014–15
AEDO projects funded	7	7
AEDO new businesses established	45	42
Aboriginal employment positions created	49	50

<sup>1</sup> The period covered is from 1 July 2015 to 30 June 2016.

### New Careers for Aboriginal People Program

The New Careers for Aboriginal People (NCAP) Program is a free program for Aboriginal people seeking employment and training advisory support services.

**Table 6 Outcomes for the New Careers for Aboriginal People Program by financial year**

	2015–16 <sup>1</sup>	2014–15
NCAP projects funded <sup>2</sup>	13	13
NCAP employment outcomes <sup>3</sup>	842	950
NCAP training outcomes <sup>4</sup>	1,062	1,121

<sup>1</sup> The period covered is from 1 July 2015 to 30 June 2016.

<sup>2</sup> Refers to not-for-profit, community-owned organisations that deliver the NCAP Program.

<sup>3</sup> Number of individuals placed in employment and still in employment after three months.

<sup>4</sup> Number of individuals who have completed an accredited training course or qualification.

### The Way Ahead for Aboriginal People Program

The Way Ahead for Aboriginal People Program provides mentoring services for Aboriginal apprentices and trainees who need additional support in the workplace. Mentors are chosen because of their experience and acceptance within Aboriginal communities.

Source: NSW Department of Industry.

**Table 7 Outcomes for The Way Ahead for Aboriginal People Program by financial year**

	2015–16 <sup>1</sup>	2014–15
Apprentices mentored	197	131
Trainees mentored	700	262
School-based apprentices or trainees mentored	277	214
<b>Total</b>	<b>1,174</b>	<b>607</b>

<sup>1</sup> The period covered is from 1 July 2015 to 30 June 2016.



## Adult and Community Education programs

Adult and Community Education (ACE) training providers are not-for-profit, community-owned organisations with a primary focus on adult education. The ACE sector delivers courses relating to leisure, personal and community development, employment skills, preparation for VET and nationally recognised programs of study.

**ACE data is collected quarterly and the most recent data available is the period January to June 2016.**

Source: NSW Department of Industry's On Line Validation System (OLiV).

### Qualification enrolments by funding source

#### By commencements, continuing enrolments and completions

**Table 8 Commencing, continuing and completed enrolments in qualifications by funding source (1 January to 30 June 2016)**

Funding source	Commencements	Continuing	Completions
Community service obligation (Smart and Skilled) <sup>1</sup>	1,248	161	93
Other government funding <sup>2</sup> excluding Smart and Skilled <sup>1</sup>	2,167	826	752
Fee for service <sup>1</sup>	411	117	101
<b>Total</b>	<b>3,826</b>	<b>1,104</b>	<b>946</b>

<sup>1</sup> Includes part qualifications.

<sup>2</sup> Includes funding from the NSW Government and the Australian Government.

#### By number of students

**Table 9 Number of students who commenced, continued and/or completed their enrolment in a qualification by funding source (1 January to 30 June 2016)**

Funding source <sup>1</sup>	Commencements	Continuing	Completions
Community service obligation (Smart and Skilled) <sup>2</sup>	1,127	159	93
Other government funding excluding Smart and Skilled <sup>2</sup>	2,062	742	640
Fee for service <sup>2</sup>	303	110	95

<sup>1</sup> As a student may fall into one or more funding group this table does not include totals.

<sup>2</sup> Includes part qualifications.

# Adult and Community Education programs

## Subject-only enrolments by funding source

nationally approved with vocational intent (i.e. supporting employment outcomes), with no more than 20 per cent in non-accredited courses.

### By commencements, continuing enrolments and completions

**Table 10** Commencements, continuing enrolments and completions for subjects-only enrolments by funding source (1 January to 30 June 2016)

Funding source	Commencements	Continuing	Completions <sup>1</sup>
Community service obligation (Smart and Skilled)	19,338	257	11,216
Other government funding <sup>2</sup> excluding Smart and Skilled	7,155	151	6,423
Fee for service	15,774	117	14,311
<b>Total</b>	<b>42,267</b>	<b>525</b>	<b>31,950</b>

<sup>1</sup> Completion is where an enrolled student either:

- achieved competency achieved/passed
- was granted recognition of prior learning
- was deemed to have satisfactorily completed a non-assessable enrolment

<sup>2</sup> A subset of 'other government-funded activity' is the Tech Savvy Seniors Program which contributes to the NSW Ageing Strategy. In the

### By number of students

**Table 11** Number of students who commenced, continued and/or completed subject-only enrolments by funding source (1 January to 30 June 2016)

Funding source <sup>1</sup>	Commencements	Continuing	Completions <sup>2</sup>
Community service obligation (Smart and Skilled)	4,813	53	3,709
Other government funding <sup>3</sup> excluding Smart and Skilled	4,034	57	3,811
Fee for service	11,163	50	10,670

<sup>1</sup> As a student may fall into one or more funding group this table does not include totals.

<sup>2</sup> Completion is where an enrolled student either:

- achieved competency achieved/passed
- was granted recognition of prior learning
- was deemed to have satisfactorily completed a non-assessable enrolment

<sup>3</sup> A subset of 'other government-funded activity' is the Tech Savvy Seniors Program which contributes to the NSW Ageing Strategy. In the reported period, there were 1,933 individual students enrolled in 6,096 subject-only enrolments.

# Adult and Community Education programs

## Community service obligations funded enrolments in qualifications

### By region

Table 12 Commencing, continuing and completed community service obligations (CSO) funded enrolments in qualifications by region

Region <sup>1</sup>	Commencements	Continuing	Completions
Capital Region	51	6	7
Central Coast	2	11	1
Central West	35	-	-
Coffs Harbour–Grafton	118	3	2
Far West and Orana	257	-	4
Hunter Valley excluding Newcastle	40	8	23
Illawarra	17	-	9
Mid North Coast	59	14	1
Murray	21	2	-
New England and North West	54	6	1
Newcastle and Lake Macquarie	3	1	1
Richmond–Tweed	245	-	16
Riverina	62	60	13
Southern Highlands and Shoalhaven	39	6	2
Sydney	233	41	12
Unknown <sup>2</sup>	12	3	1
<b>Total</b>	<b>1,248</b>	<b>161</b>	<b>93</b>

<sup>1</sup> For the area a region covers see Figure 10 on page 39.

<sup>2</sup> The postcode of a student's home address was not recorded.

### By disadvantaged student group

Table 13 Commencing, continuing and completed CSO-funded enrolments in qualifications by disadvantaged student group

Disadvantaged student group <sup>1</sup>	Commencements	Continuing	Completions
Aboriginal or Torres Strait Islanders	221	14	8
Students with disabilities	339	45	24
Students living in a regional area	350	36	26
Students living in a remote area	645	77	40

<sup>1</sup> As a student may fall into one or more group this table does not include totals.

# Adult and Community Education programs

## CSO-funded students doing qualifications

### By region

Table 14 Number of CSO-funded students who commenced, continued and/or completed qualifications by region

Region <sup>1</sup>	Commencements	Continuing	Completions
Capital Region	51	6	7
Central Coast	2	11	1
Central West	35	-	-
Coffs Harbour–Grafton	100	3	2
Far West and Orana	202	-	4
Hunter Valley excluding Newcastle	40	8	23
Illawarra	17	-	9
Mid North Coast	59	14	1
Murray	21	2	-
New England and North West	49	6	1
Newcastle and Lake Macquarie	3	1	1
Richmond–Tweed	239	-	16
Riverina	54	60	13
Southern Highlands and Shoalhaven	39	4	2
Sydney	205	41	12
Unknown <sup>2</sup>	11	3	1
<b>Total</b>	<b>1,127</b>	<b>159</b>	<b>93</b>

<sup>1</sup> For the area a region covers see Figure 10 on page 39.

<sup>2</sup> The postcode of a student's home address was not recorded.

### By disadvantaged student group

Table 15 Number of CSO-funded students who commenced, continued and/or completed qualifications by disadvantaged student group

Disadvantaged student group <sup>1</sup>	Commencements	Continuing	Completions
Aboriginal or Torres Strait Islanders	186	14	8
Students with disabilities	275	44	24
Students living in a regional area	340	34	26
Students living in a remote area	563	77	40

<sup>1</sup> As a student may fall into one or more group this table does not include totals.

# Adult and Community Education programs

## CSO-funded subject-only enrolments

### By region

**Table 16** Commencing, continuing and completed CSO-funded enrolments for subjects only by region (1 January to 30 June 2016)

Region <sup>1</sup>	Commencements	Continuing	Completions
Capital Region	69	1	55
Central Coast	2,404	186	1,172
Central West	1,827	26	1,188
Coffs Harbour–Grafton	663	-	560
Far West and Orana	1,035	5	467
Hunter Valley excluding Newcastle	884	-	520
Illawarra	830	9	363
Mid North Coast	2,169	2	1,571
Murray	30	-	30
New England and North West	1,168	-	831
Newcastle and Lake Macquarie	779	-	528
Richmond–Tweed	1,325	10	790
Riverina	1,433	4	506
Southern Highlands and Shoalhaven	612	6	321
Sydney	3,887	-	2,172
Unknown <sup>2</sup>	223	8	142
<b>Total</b>	<b>19,338</b>	<b>257</b>	<b>11,216</b>

<sup>1</sup> For the area a region covers see Figure 10 on page 39.

<sup>2</sup> The postcode of a student's home address was not recorded.

### By disadvantaged student group

**Table 17** Number of CSO-funded students who commenced, continued and/or completed enrolments in subjects only by disadvantaged student group (1 January to

Disadvantaged student group <sup>1</sup>	Commencements	Continuing	Completions
Aboriginal or Torres Strait Islanders	3,476	18	1,746
Students with disabilities	4,912	28	2,551
Students living in a regional area	5,921	55	3,673
Students living in a remote area	6,993	45	4,112

<sup>1</sup> As a student may fall into one or more group this table does not include totals.

# Adult and Community Education programs

## CSO-funded students doing subjects only

### By region

Table 18 Number of CSO-funded students who commenced, continued and/or completed enrolments in subjects only by region

Region <sup>1</sup>	Commencements	Continuing	Completions
Capital Region	32	1	32
Central Coast	298	32	216
Central West	447	5	422
Coffs Harbour–Grafton	304	-	265
Far West and Orana	310	5	185
Hunter Valley excluding Newcastle	160	-	132
Illawarra	135	2	120
Mid North Coast	549	1	489
Murray	9	-	9
New England and North West	554	-	444
Newcastle and Lake Macquarie	148	-	131
Richmond–Tweed	616	2	484
Riverina	271	2	130
Southern Highlands and Shoalhaven	119	1	64
Sydney	808	-	543
Unknown <sup>2</sup>	53	2	43
<b>Total</b>	<b>4,813</b>	<b>53</b>	<b>3,709</b>

<sup>1</sup> For the area a region covers see Figure 10 on page 39.

<sup>2</sup> The postcode of a student's home address was not recorded.

### By disadvantaged student group

Table 19 Number of CSO-funded students who commenced, continued and/or completed enrolments in subjects only by disadvantaged student group (1 January to

Disadvantaged student group <sup>1</sup>	Commencements	Continuing	Completions
Aboriginal or Torres Strait Islanders	956	4	575
Students with disabilities	1,176	7	844
Students living in a regional area	1,497	10	1,220
Students living in a remote area	2,133	14	1,648

<sup>1</sup> As a student may fall into one or more group this table does not include totals.

# Apprenticeships and traineeships

Source: The NSW Department of Industry's Integrated Vocational Education and Training System (IVETS).

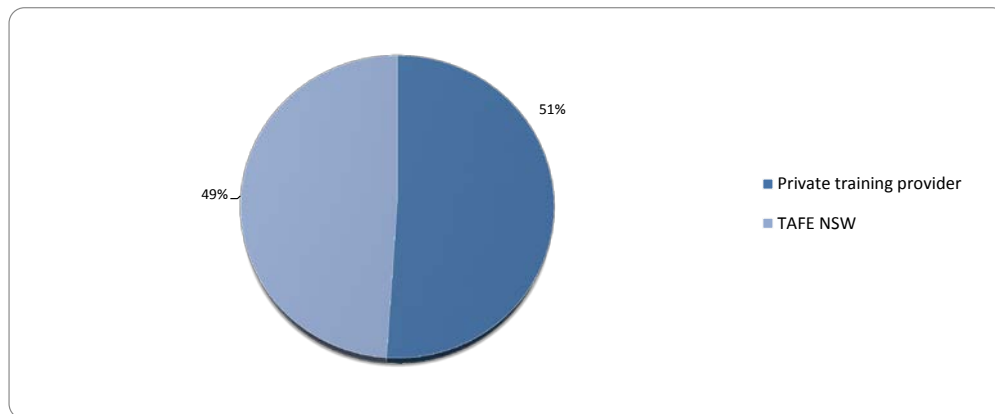
## Training contract approvals for apprenticeships and traineeships

### By training provider type

**Table 20** Training contract approvals by training provider type  
(YTD: 1 January to 30 June 2016; previous YTD: 1 January to 30 June 2015; and 2015 calendar year)

Training provider type	YTD	Previous YTD	2015
Private training provider	14,669	11,689	22,587
TAFE NSW	14,063	13,783	20,362
Unknown <sup>1</sup>	-	-	3
<b>Total</b>	<b>28,732</b>	<b>25,472</b>	<b>42,952</b>

<sup>1</sup> Interstate public training providers who have training contracts with NSW-based apprentices.



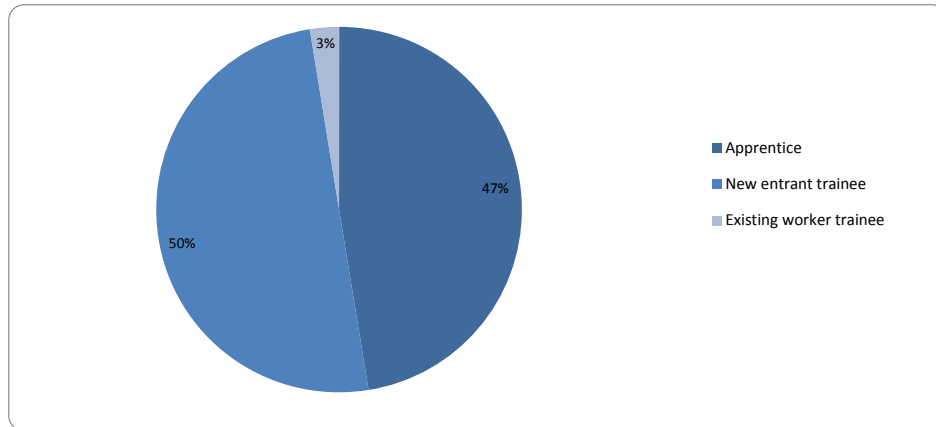
**Figure 1** Training contract approval by training provider type (YTD: 1 January to 30 June 2016)

# Apprenticeships and traineeships

## By student type

**Table 21 Training contract approvals by student type**  
(YTD: 1 January to 30 June 2016; previous YTD: 1 January to 30 June 2015; and 2015 calendar year)

Student type	YTD	Previous YTD	2015
Apprentice	13,622	12,269	18,614
New entrant trainee	14,373	11,679	22,013
Existing worker trainee	737	1,524	2,325
<b>Total</b>	<b>28,732</b>	<b>25,472</b>	<b>42,952</b>



**Figure 2 Training contract approvals by student type (YTD: 1 January to 30 June 2016)**

## By disadvantaged student group

**Table 22 Training contract approvals by disadvantaged student group**  
(YTD: 1 January to 30 June 2016; previous YTD: 1 January to 30 June 2015; and 2015 calendar year)

Disadvantaged student group <sup>1</sup>	YTD	Previous YTD	2015
Aboriginal or Torres Strait Islanders	1,653	1,668	2,731
Students with disabilities	752	586	1,036
Students living in a regional area	5,949	4,959	8,235
Students living in a remote area	5,797	5,562	8,978
Women in non-traditional trades	590	550	932

<sup>1</sup> As a student may fall into one or more group this table does not include totals. Also, data is not collected about individuals on a training contract who hold a humanitarian visa or are long-term unemployed.



# Apprenticeships and traineeships

## By month (for previous 18 months)

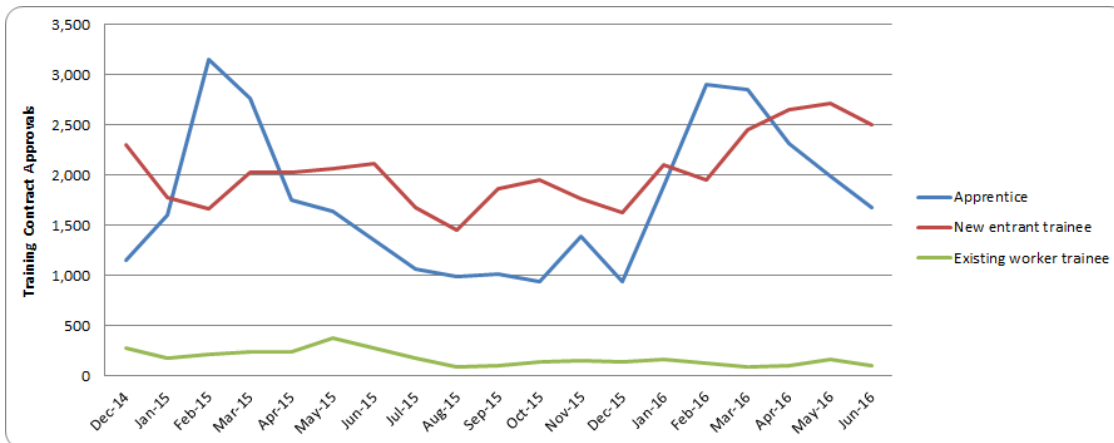


Figure 3 Training contract approvals by month (for previous 18 months)

## By region

Table 23 Training contract approvals by region  
(YTD: 1 January to 30 June 2016; previous YTD: 1 January to 30 June 2015; and 2015 calendar year)

Region <sup>1</sup>	YTD	Approvals as % of a region's population (YTD)	Previous YTD	2015
Capital Region	968	0.40%	872	1,416
Central Coast	1,147	0.31%	840	1,612
Central West	861	0.39%	823	1,266
Coffs Harbour–Grafton	487	0.33%	501	777
Far West and Orana	523	0.40%	586	1,025
Hunter Valley excluding Newcastle	1,172	0.40%	964	1,593
Illawarra	1,175	0.37%	1,110	1,744
Mid North Coast	733	0.30%	772	1,246
Murray	545	0.42%	472	759
New England and North West	924	0.45%	779	1,246
Newcastle and Lake Macquarie	1,682	0.42%	1,313	2,241
Richmond–Tweed	789	0.30%	745	1,239
Riverina	922	0.53%	852	1,455
Southern Highlands and Shoalhaven	602	0.37%	638	976
Sydney	15,812	0.31%	13,803	23,481
Unknown <sup>2</sup>	390	N/A	402	876
<b>Total</b>	<b>28,732</b>	<b>0.34%</b>	<b>25,472</b>	<b>42,952</b>

<sup>1</sup> For the area a region covers see Figure 10 on page 39.

<sup>2</sup> Not enough data to map training location to a NSW region.

# Apprenticeships and traineeships

## Top five Apprenticeships and Traineeships by training contract approvals

### Top five Apprenticeships for year to date

Table 24 Top five apprenticeship by qualification (YTD: 1 January to 30 June 2016)

Apprenticeship qualification	YTD
Carpentry Certificate III	1,861
Electrotechnology - Electrician Certificate III	1,842
Plumbing Certificate III	1,090
Automotive - Light Vehicle Mechanical Technology Certificate III	926
Hospitality - Commercial Cookery Certificate III	781

### Top five Apprenticeships for previous year to date

Table 25 Top five apprenticeship by qualification (previous YTD: 1 January to 30 June 2015)

Apprenticeship qualification	Previous YTD
Electrotechnology - Electrician Certificate III	1,629
Carpentry Certificate III	1,604
Plumbing Certificate III	978
Automotive - Light Vehicle Mechanical Technology Certificate III	913
Hospitality - Commercial Cookery Certificate III	758

### Top five Traineeships for year to date

Table 26 Top five traineeships by qualification (YTD: 1 January to 30 June 2016)

Traineeship qualification	YTD
Community Services - Early Childhood Education and Care Certificate III	1,759
Hospitality Certificate III	1,172
Retail - Retail Operations Certificate III	714
Business Services - Customer Engagement Certificate III	572
Transport and Logistics - Driving Operations Certificate III	516

## Apprenticeships and traineeships

### Top five traineeships for previous year to date

Table 27 Top five traineeships by qualification (previous YTD: 1 January to 30 June 2015)

Traineeship qualification	Previous YTD
Hospitality Certificate III	1,289
Community Services - Early Childhood Education and Care Certificate III	1,249
Retail - Retail Operations Certificate III	808
Transport and Logistics - Warehousing Operations Certificate III	557
Business Services - Business Administration Certificate III	492

## Apprentices and trainees in training

Table 28 Number of apprentices and trainees in training (as at 30 June 2016)

Student type	Number
Apprentices	52,964
Existing worker trainees	3,726
New entrant trainees	30,848
<b>Total</b>	<b>87,538</b>

## Training contract completion rates for Apprenticeships and Traineeships

Table 29 Contract completion rates for apprenticeships and traineeships (calendar years 2014 and 2015)

Contract type	2015 (%)	2014 (%)
Apprenticeship	56.9%	57.5%
Traineeship	63.9%	65.7%
<b>Total</b>	<b>59.6%</b>	<b>64.0%</b>

# Apprenticeships and traineeships

## Bert Evans Apprentice Scholarships

The Bert Evans Apprentice Scholarships assist apprentices in NSW who have demonstrated:

- hardship in their personal circumstances
- an aptitude for VET that will lead them to complete their trade training successfully
- a positive attitude and application in the workplace and in off-the-job training.

Source: NSW Department of Industry

Table 30 Number of students receiving a Bert Evans Scholarship (calendar years 2014 and 2015)

	2016	2015	2014
Scholarships awarded	67	50	101

# Smart and Skilled Program

Smart and Skilled is the NSW Government's initiative to create a successful contestable VET market in NSW, and achieve the goals of VET reform and the skill priorities of NSW.

Smart and Skilled divides subsidised training into two broad categories known as 'program streams'— these are Entitlement and Targeted Priorities.

The Entitlement program stream encourages individuals to gain a post-school qualification at the Certificate I, II or III level and includes apprenticeships and traineeships (which may be at the Certificate IV, Diploma or Advanced Diploma level). The Targeted Priorities program stream encourages individuals to gain a post-school qualification at the Certificate IV, Diploma or Advanced Diploma level.

Each program stream contains several 'programs'. The Entitlement program stream contains the:

- Entitlement Foundation Skills Program
- Entitlement Full Qualifications Program
- Entitlement Apprenticeships and Traineeships Program.

The Targeted Priorities program stream contains the:

- Targeted Priorities Full Qualifications Program
- Targeted Priorities Prevocational and Part Qualification Program.

A student may participate in more than one Smart and Skilled program, training provider or region.

Smart and Skilled commenced on 1 January 2015. Please consider this when comparing 2015 YTD and 2016 YTD data.

Source: IVETS

## Enrolments

### By Smart and Skilled program

**Table 31 Commencing, continuing and completed enrolments by Smart and Skilled program**  
(YTD: 1 January to 30 June 2016; previous YTD: 1 January to 30 June 2015; and 2015 calendar year)

Smart and Skilled program	Commencements	Continuing	Completions
Entitlement – Apprenticeships	11,246	11,361	359
Entitlement – Traineeships	10,473	5,600	2,673
Entitlement Foundation Skills	7,327	695	2,482
Entitlement Full Qualifications	37,942	10,559	10,376
Other (Full Qualifications) 1	12	-	1
Targeted Priorities (TP) Full Qualifications	6,416	932	753
TP Prevocational and Part Qualifications –Pre-apprenticeship <sup>2</sup>	409	49	17
TP Prevocational and Part Qualifications –Pre-traineeship <sup>3</sup>	1,870	239	493
TP Prevocational and Part Qualifications – Prevocational <sup>3</sup>	297	10	42
TP Prevocational and Part Qualifications – Targeted Skills <sup>4</sup>	10,970	918	2,250
<b>Total</b>	<b>86,962</b>	<b>30,363</b>	<b>19,446</b>

<sup>1</sup>The training falls under an existing Smart and Skilled program but could not be processed with the standard method.

<sup>2</sup>Part qualifications that assist individuals to gain an apprenticeship or traineeship.

<sup>3</sup>Part or full qualifications that assist individuals to gain employment or enrol in further education.

<sup>4</sup>Part qualifications for priority groups and industries to assist individuals to upgrade their training and/or learn new skills for employment.

# Smart and Skilled Program

## By disadvantaged student group

**Table 32 Commencing, continuing and completed enrolments by disadvantaged student group (YTD: 1 January to 30 June 2016)**

Disadvantaged student group <sup>1</sup>	Commencements	Continuing	Completions
Aboriginal or Torres Strait Islanders	9,026	3,282	1,420
Students with disabilities	7,153	1,878	1,725
Humanitarian visa holders	239	45	97
Long-term unemployed	4,546	1,323	1,160
Students living in a regional area	18,120	6,798	3,913
Students living in a remote area	19,282	6,842	3,357

<sup>1</sup>As a student may fall into one or more group this table does not include totals.

## By region

**Table 33 Commencing, continuing and completed enrolments by region (YTD: 1 January to 30 June 2016)**

Region <sup>1</sup>	Commencements	Continuing	Completions
Capital Region	2,138	667	525
Central Coast	3,792	1,519	998
Central West	4,702	1,085	796
Coffs Harbour–Grafton	2,390	1,090	360
Far West and Orana	2,423	653	305
Hunter Valley excluding Newcastle	3,785	1,634	733
Illawarra	4,392	1,199	1,263
Mid North Coast	3,364	1,452	608
Murray	992	279	173
New England and North West	3,543	1,481	540
Newcastle and Lake Macquarie	6,291	2,581	1,429
Richmond–Tweed	4,238	1,489	725
Riverina	2,792	929	414
Southern Highlands and Shoalhaven	1,477	650	338
Sydney	40,643	13,652	10,240
<b>Total</b>	<b>86,962</b>	<b>30,360</b>	<b>19,447</b>

<sup>1</sup>For the area a region covers see Figure 10 on page 39.

# Smart and Skilled Program

By training provider type

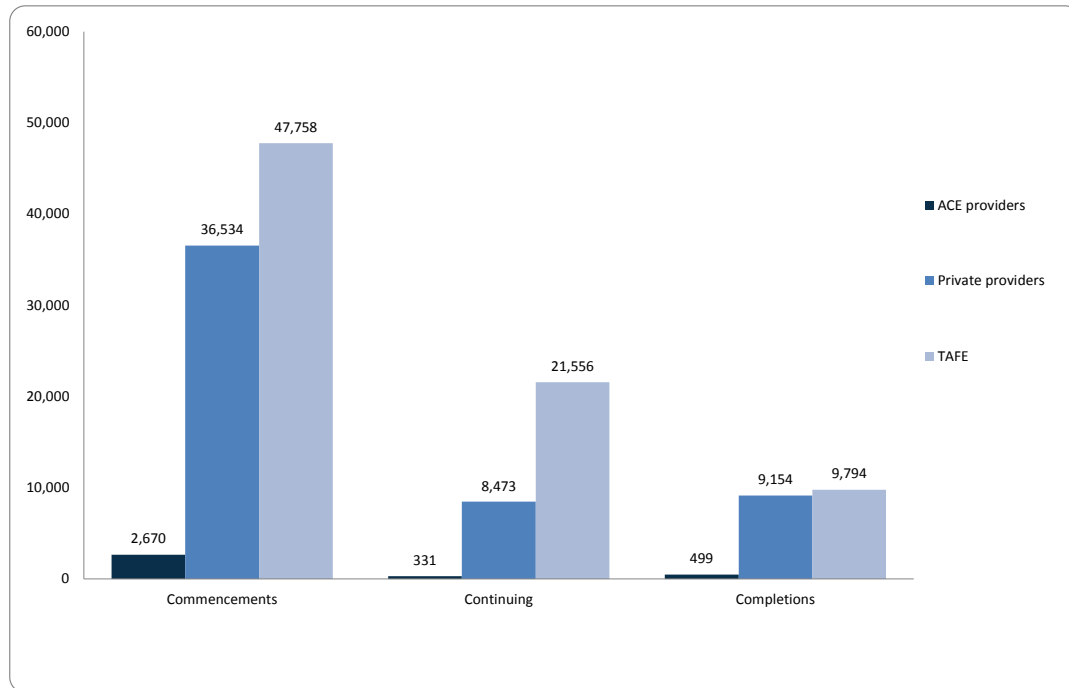


Figure 4 Commencing, continuing and completed enrolments by training provider type (YTD: 1 January to 30 June 2016)

# Smart and Skilled Program

## Students

A student may participate in more than one Smart and Skilled program, training provider or region.

### By Smart and Skilled program

**Table 34** Number of students who commenced, continued and/or completed a qualification or accredited course under a Smart and Skilled program (YTD: 1 January to 30 June 2016)

Smart and Skilled program	Commencements	Continuing	Completions
Entitlement – Apprenticeships	11,224	11,325	359
Entitlement – Traineeships	10,423	5,582	2,673
Entitlement Foundation Skills	7,116	682	2,445
Entitlement Full Qualifications	36,706	10,411	10,266
Other (Full Qualifications) 1	10	-	1
Targeted Priorities (TP) Full Qualifications	6,308	931	739
TP Prevocational and Part Qualifications – Part Qualifications Pre-apprenticeship <sup>2</sup>	402	49	17
TP Prevocational and Part Qualifications – Part Qualifications Pre-traineeship <sup>2</sup>	1,837	239	478
TP Prevocational and Part Qualifications – Part Qualifications Prevocational <sup>3</sup>	276	10	42
TP Prevocational and Part Qualifications – Targeted Skills <sup>4</sup>	10,186	863	2,101
<b>Overall unique student number<sup>5</sup></b>	<b>82,556</b>	<b>29,972</b>	<b>18,924</b>

<sup>1</sup>The training falls under an existing Smart and Skilled program but could not be processed with the standard method.

<sup>2</sup>Part qualifications that assist individuals to gain an apprenticeship or traineeship.

<sup>3</sup>Part or full qualifications that assist individuals to gain employment or enrol in further education.

<sup>4</sup>Part qualifications for priority groups and industries to assist individuals to upgrade their training and/or learn new skills for employment.

<sup>5</sup>The overall unique student number is not a total.

### By region

**Table 35** Number of students who commenced, continued and/or completed a qualification or accredited course under a Smart and Skilled program by region (YTD: 1 January to 30 June 2016)

Region <sup>1</sup>	Commencements	Commence-ments as % of a region's population	Continuing	Completions
Capital Region	2,029	0.98%	665	515
Central Coast	3,704	1.19%	1,505	985
Central West	4,322	2.20%	1,079	760
Coffs Harbour–Grafton	2,310	1.77%	1,070	356
Far West and Orana	2,258	1.99%	639	302
Hunter Valley excluding Newcastle	3,633	1.49%	1,600	710
Illawarra	4,098	1.48%	1,194	1,154
Mid North Coast	3,183	1.58%	1,426	600
Murray	964	0.87%	278	169
New England and North West	3,308	1.88%	1,461	533



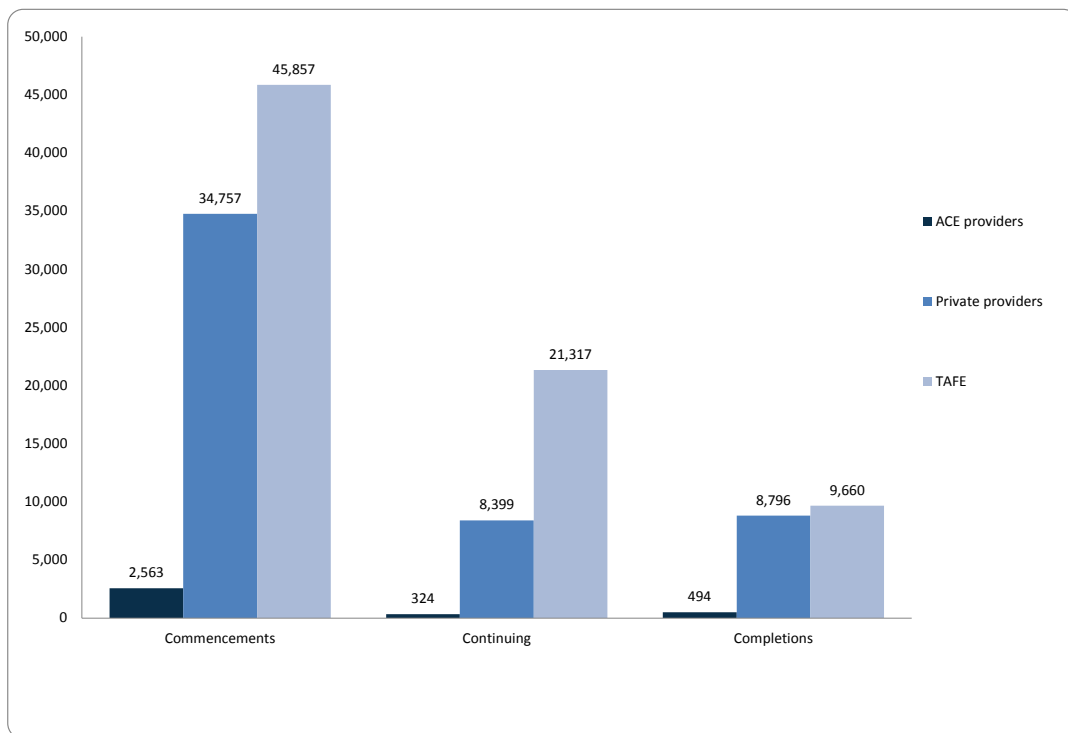
# Smart and Skilled Program

Region <sup>1</sup>	Commencements	Commence-ments as % of a region's population	Continuing	Completions
Newcastle and Lake Macquarie	6,060	1.77%	2,550	1,390
Richmond–Tweed	3,830	1.68%	1,457	713
Riverina	2,710	1.81%	924	404
Southern Highlands and Shoalhaven	1,430	1.04%	642	338
Sydney	39,358	0.90%	13,564	10,060

<sup>1</sup>For the area a region covers see Figure 10 on page 39.

<sup>2</sup>The overall unique student number is not the same as a total.

## By training provider type



**Figure 5** Number of students who commenced, continued and/or completed a qualification or accredited course by training provider type (YTD: 1 January to 30 June 2016)

# Smart and Skilled Program

## Smart and Skilled training providers

A 'Smart and Skilled training provider' means a registered training organisation the NSW Department of Industry has contracted to offer government-subsidised training under Smart and Skilled.

### By Smart and Skilled programs with regional approvals

**Table 36** Number of Smart and Skilled training providers with regional training delivery approvals by Smart and Skilled program (as at 30 June 2016)

Region <sup>1</sup>	No. of training providers approved for the Entitlement Full Qualifications Program	No. of training providers approved for the Targeted Priorities Full Qualification Program
Capital Region	49	42
Central Coast	56	53
Central West	47	31
Coffs Harbour–Grafton	38	22
Far West and Orana	37	21
Hunter Valley excluding Newcastle	52	44
Illawarra	68	54
Mid North Coast	40	29
Murray	25	13
New England and North West	53	35
Newcastle and Lake Macquarie	83	60
Richmond–Tweed	50	38
Riverina	43	36
Southern Highlands and Shoalhaven	47	33
Sydney	268	258

<sup>1</sup>For the area a region covers see Figure 10 on page 39.

### By Smart and Skilled programs with state wide approvals

**Table 37** Number of Smart and Skilled training providers with state wide training delivery approvals by Smart and Skilled program (as at 30 June 2016)

Smart and Skilled program	Training providers
Entitlement Apprenticeships and Traineeships	408
Entitlement Foundation Skills	44

# Smart and Skilled Program

## Top 10 qualifications

### By commencements

**Table 38 Top 10 qualifications by commencements (YTD: 1 January to 30 June 2016)**

Qualification	Commencements
Certificate III in Early Childhood Education and Care	4,600
Certificate III in Individual Support	4,095
Certificate III in Business Administration	3,352
Certificate III in Hospitality	2,382
Certificate III in Carpentry	1,742
Certificate III in Electrotechnology Electrician	1,504
Certificate III in Retail Operations	1,481
Certificate III in Warehousing Operations	1,232
Certificate II in Retail Services	1,122
Certificate III in Information, Digital Media and Technology	1,116

### By continuing enrolments

**Table 39 Top 10 qualifications by continuing enrolments (YTD: 1 January to 30 June 2016)**

Qualification	Continuing
Certificate III in Carpentry	1,725
Certificate III in Early Childhood Education and Care	1,626
Certificate III in Electrotechnology Electrician	1,561
Certificate III in Commercial Cookery	1,045
Certificate III in Hospitality	1,042
Certificate III in Plumbing	922
Certificate III in Light Vehicle Mechanical Technology	862
Certificate III in Hairdressing	653
Certificate III in Retail Operations	571
Certificate III in Aged Care	541

### By completions

**Table 40 Top 10 qualifications by completions (YTD: 1 January to 30 June 2016)**

Qualification	Completions
Certificate III in Early Childhood Education and Care	1,194
Certificate III in Hospitality	1,045
Certificate III in Business Administration	790
Certificate III in Individual Support	694
Certificate II in Retail Services	470
Certificate III in Aged Care	396
Certificate III in Retail Operations	372
Certificate II in Business	312
Routine English Language Skills	282
Certificate III in Warehousing Operations	281

<sup>1</sup> This qualification (code BSB30415) supersedes and is equivalent to the Certificate III in Business (code BSB30412).

# Smart and Skilled Program

## Fee-Free Scholarships

Fee-Free Scholarships are part of the NSW Government's commitment under the Reskilling NSW strategy. The strategy provides \$48 million over four years for 200,000 Smart and Skilled concession-eligible 15 to 30 year olds. Fee-Free Scholarships are available to eligible students who undertake study with an approved Smart and Skilled training provider for a qualification from certificate level I to IV that is on the NSW Skills List, with priority giving to eligible social housing residents. Fee-Free Scholarships have been available since 1 July 2015.

### By region and training provider type

**Table 41** Number of Fee-Free Scholarships by region and training provider type (1 July 2015 to 30 June 2016)

Region <sup>1</sup>	Fee-Free Scholarships	Training provider type	
		TAFE NSW	Private training provider
Capital Region	584	390	194
Central Coast	1,322	941	381
Central West	987	883	104
Coffs Harbour–Grafton	904	800	104
Far West and Orana	350	291	59
Hunter Valley excluding Newcastle	975	639	336
Illawarra	1,428	1,035	393
Mid North Coast	1,320	1,162	158
Murray	322	234	88
New England and North West	679	609	70
Newcastle and Lake Macquarie	1,810	1,353	457
Richmond–Tweed	1,257	1,052	205
Riverina	689	528	161
Southern Highlands and Shoalhaven	480	307	173
Sydney	11,206	8,784	2,422
<b>Total</b>	<b>24,313</b>	<b>19,008</b>	<b>5,305</b>

<sup>1</sup>For the area a region covers see Figure 10 on page 39.

### By region and selected student characteristics

**Table 42** Number of Fee-Free Scholarships by region and selected student characteristics (1 July 2015 to 30 June 2016)

Region <sup>1</sup>	Male	Female	Living in	
			social housing	holds a humanitarian visa
Capital Region	203	381	56	1
Central Coast	415	907	125	-
Central West	323	663	83	1
Coffs Harbour–Grafton	379	525	51	14
Far West and Orana	143	207	20	-
Hunter Valley excluding Newcastle	324	651	86	1
Illawarra	621	807	195	9
Mid North Coast	465	855	38	-
Murray	103	219	44	10
New England and North West	226	453	48	-
Newcastle and Lake Macquarie	795	1,014	198	8
Richmond–Tweed	549	708	33	-
Riverina	188	501	69	-
Southern Highlands and Shoalhaven	185	294	61	-
Sydney	4,361	6,843	1,262	174
<b>Total</b>	<b>9,280</b>	<b>15,028</b>	<b>2,369</b>	<b>218</b>

<sup>1</sup>For the area a region covers see Figure 10 on page 39.

# Smart and Skilled Program

**Table 43** Number of Fee-Free Scholarships by region and age cohort (1 July 2015 to 30 June 2016)

Region <sup>1</sup>	15–19 years	20–24 years	25–30 years
Capital Region	253	198	133
Central Coast	584	449	289
Central West	371	333	283
Coffs Harbour–Grafton	395	288	220
Far West and Orana	144	129	77
Hunter Valley excluding Newcastle	383	375	217
Illawarra	542	566	318
Mid North Coast	576	434	309
Murray	137	105	80
New England and North West	267	239	173
Newcastle and Lake Macquarie	720	650	436
Richmond–Tweed	535	425	297
Riverina	256	254	179
Southern Highlands and Shoalhaven	179	186	115
Sydney	3,908	3,936	3,350
<b>Total</b>	<b>9,250</b>	<b>8,567</b>	<b>6,476</b>

<sup>1</sup>For the area a region covers see Figure 10 on page 39.

# Glossary

<b>ACE</b>	Adult and Community Education
<b>Accredited vocational training</b>	Education approved by the Australian Skills Quality Authority.
<b>Active provider</b>	A Smart and Skilled contracted training provider who has delivered training under their Smart and Skilled contract.
<b>Adult and Community Education</b>	A not-for profit, community-owned organisation with a primary focus on adult education. The ACE sector delivers courses relating to leisure, personal and community development, employment skills, preparation for VET and nationally recognised programs of study.
<b>AEDO</b>	Aboriginal Enterprise Development Officer Program
<b>Apprentice</b>	An employee who is party to an apprenticeship to learn a trade on-the-job under a qualified tradesperson and off-the-job with a registered training organisation.
<b>Approval (training contract)</b>	The official confirmation by Training Services NSW that an apprenticeship or traineeship has commenced with an employer.
<b>Approved (training provider)</b>	A training provider has been offered and has accepted a Smart and Skilled contract.
<b>Approved qualification</b>	A qualification that a training provider is approved to deliver under Smart and Skilled.
<b>AQF</b>	Australian Quality Framework
<b>ASDB</b>	The NSW Department of Industry's Aboriginal Services Database.
<b>ATSI</b>	Aboriginal or Torres Strait Islander
<b>Australian Quality Framework</b>	Defines the levels and types of qualifications for the non-school educational sector nationally.
<b>Bert Evans Apprentice Scholarships</b>	<p>These scholarships assist apprentices in NSW who have demonstrated:</p> <ul style="list-style-type: none"> <li>• hardship in their personal circumstances</li> <li>• an aptitude for VET that will lead them to complete their trade training successfully</li> <li>• a positive attitude and application in the workplace and in off-the-job training.</li> </ul> <p>A maximum of 50 scholarships are awarded annually, including 10 NSW Country Apprentice Scholarships.</p>
<b>Commencement</b>	Occurs when a student begins to participate in training for a qualification or accredited course; or, for a subject-only enrolment, begins to participate in a module or unit of competency that is scheduled to be completed in the current year.
<b>Commitment</b>	Represents a commitment by government to subsidise a training provider for the cost of training an approved prospective student in an approved qualification, accredited course or subject-only enrolment.
<b>Community service obligation (CSO)</b>	A service with an identifiable community or social benefit that cannot be supplied under commercial costs and conditions, and that government subsidises.
<b>Continuing</b>	A student who is continuing training for a qualification or accredited course in a subsequent year to the commencement year and who is still training at the time of this report; or, for a subject-only enrolment, an enrolment in a module or unit of competency that is scheduled to be completed in a future year.
<b>Completion</b>	A student who has successfully completed a qualification or accredited course; or, for a subject-only enrolment, has completed a module or unit of competency.
<b>Completion Rate</b>	
<b>CSO</b>	Community service obligation
<b>Disadvantaged student group</b>	A student who falls into one or more equity categories of: being an Aboriginal or Torres Strait Islander, being disabled, being a humanitarian visa holder, being long-term unemployed, or living in a regional or remote area.
<b>Enrolment</b>	The engagement and participation of a student in an approved qualification, accredited course or subject-only training.

<b>Existing worker trainee</b>	A long-term employee (greater than three months full time or 12 months part time) who is party to a traineeship to learn a recognised vocation on-the-job under supervision and off-the-job with a training provider.
<b>Fee for service</b>	A VET qualification or accredited course that is not subsidised by government (a student or their employer pays the full fee for the training).
<b>Fee-Free Scholarships</b>	Part of the NSW Government's commitment under the Reskilling NSW strategy. It provides \$48 million over four years for 200,000 Smart and Skilled concession-eligible 15 to 30 year olds. Scholarships are available to eligible students who undertake study with an approved Smart and Skilled training provider for a qualification from Certificate level I to IV that is on the NSW Skills List, with priority giving to eligible social housing residents.
<b>FY</b>	Financial year
<b>Jobs of Tomorrow Scholarships</b>	Part of the NSW Government's commitment under the Reskilling NSW strategy which provides \$25 million over four years for 25,000 scholarships for students to undertake selected VET qualifications in science, technology, engineering and mathematics (STEM). In each calendar year, the first 6,250 eligible students who apply and have their enrolment confirmed will be offered a scholarship.
<b>IVETS</b>	The NSW Department of Industry's Integrated Vocational Education and Training Services database.
<b>NCAP</b>	New Careers for Aboriginal People Program
<b>NCVER</b>	National Centre for Vocational Education Research
<b>New entrant trainee</b>	An employee who is party to a traineeship to learn a recognised vocation on-the-job under supervision and off-the-job with a training provider.
<b>Non-accredited vocational training</b>	Education with a vocational intent that is non-assessable and not recognised under the AQF.
<b>NSW Ageing Strategy</b>	NSW Government commitment to support seniors in the community with a range of programs and initiatives.
<b>OLiV</b>	The NSW Department of Industry's On Line Validation System.
<b>Private training provider</b>	A non-TAFE training provider that is registered with the Australian Skills Quality Authority, and can deliver nationally recognised courses and award AQF VET qualifications.
<b>Qualification</b>	A nationally recognised qualification under the Australian Qualifications Framework (AQF).
<b>Recognition of prior learning</b>	An individual has shown evidence to a training provider that they have acquired a skill or knowledge through their work experience or prior formal training and the training provider has awarded them a part or full qualification without the need for further study.
<b>Region</b>	There are 15 training regions (which are based on Australian Bureau of Statistics SA4 level). See Figure 6 on page 32.
<b>Regional</b>	A classification of a student's residence using the Australian Bureau of Statistics Accessibility/Remoteness Index of Australia.
<b>Registered training organisation (RTO)</b>	An training provider that is registered with the Australian Skills Quality Authority – which allows them to deliver nationally courses and award AQF VET qualifications.
<b>Remote</b>	A classification of a student's residence using the Australian Bureau of Statistics Accessibility/Remoteness Index of Australia.
<b>Reskilling NSW strategy</b>	An NSW Government initiative to help individuals get a job by giving them access to VET.
<b>Returned (contract)</b>	A training provider that has chosen to withdraw from its Smart and Skilled contract.
<b>Smart and Skilled</b>	The NSW Government's initiative to create a successful contestable VET market in NSW, and achieve the goals of VET reform and the skill priorities of NSW.
<b>Smart and Skilled program</b>	A subset of Smart and Skilled government-subsidised training with specific characteristics.
<b>Status (training provider)</b>	Indicates whether a Smart and Skilled training provider's contract has been approved, suspended, returned or terminated.
<b>Subject-only enrolment</b>	An enrolment in a module or unit of competency that is not intended to lead to the issue of a qualification or accredited course.

<b>Suspended (training provider)</b>	A training provider's Smart and Skilled contract has been temporarily suspended for one or more breaches of contract conditions.
<b>TAFE NSW</b>	The NSW Government's public training provider of VET in NSW.
<b>Tech Savvy Seniors Program</b>	A joint NSW Government and Telstra initiative that provides grants to ACE providers to deliver training in the use of smart technologies to people over 60 years of age.
<b>Terminated (training provider)</b>	A training provider's Smart and Skilled contract has been terminated for one or more breaches of contract conditions.
<b>Total VET activity</b>	All accredited VET activity from all training providers (unless granted an exemption) in accordance with the National VET Provider Collection Data Requirements Policy.
<b>Trade</b>	The occupation to which an apprenticeship leads.
<b>Training contract</b>	The mutual agreement between an employer and apprentice or trainee.
<b>Training contract type</b>	A training contract can be either an apprenticeship, an existing worker traineeship or a new entrant traineeship.
<b>Training provider</b>	A training provider that is registered with the Australian Skills Quality Authority, and can deliver nationally recognised courses and award AQF VET qualifications.
<b>VET</b>	Vocational education and training
<b>VET FEE-HELP</b>	An Australian Government income-contingent loan scheme for VET students. A loan covers a student's fees. The student is only required to pay back the loan when their income reaches a set level.
<b>Vocation</b>	The occupation to which a traineeship leads.
<b>Vocational Training Assistance</b>	Provided through the Vocational Training Assistance Scheme (VTAS) – a program that provides eligible apprentices and trainees with monetary assistance to attend off-the-job training during the term of their apprenticeship or traineeship. Existing worker trainees are ineligible to claim vocational training assistance. Current rates for travel are 12 cents per kilometre and \$28 per night for accommodation, and a one-off payment of up to \$2,000 for a student who has to relocate.
<b>VTAS</b>	Vocational Training Assistance Scheme
<b>Woman in non-traditional trades</b>	Currently, 167 out of a total 1,211 trades are considered to be non traditional trades for women. Examples include Certificate III in Aeroskills (Mechatronics) and Certificate III in Solid Plastering.
<b>YTD</b>	Year to date



# NSW training regions

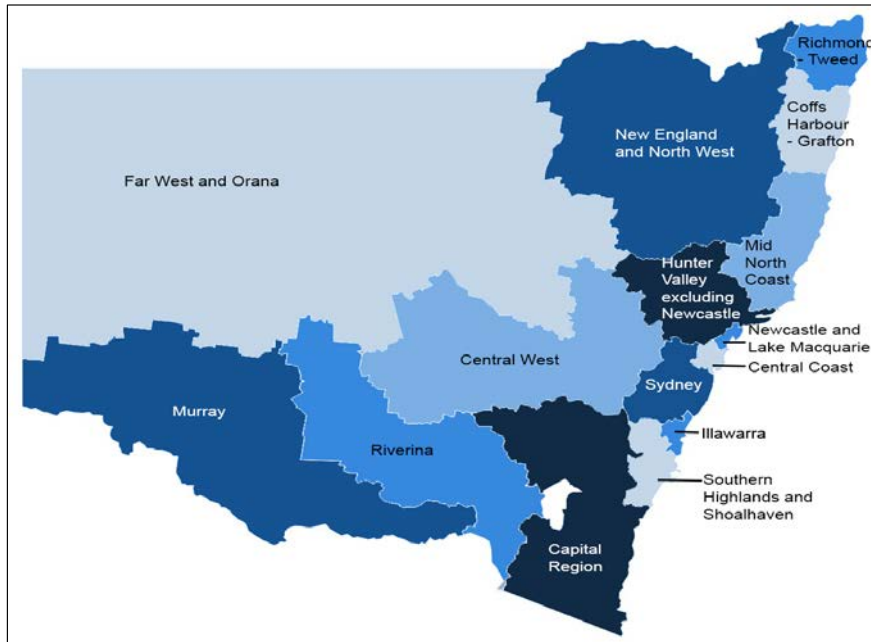


Figure 6 Training regions in NSW

Table 44 Major towns or areas for each region

This region...	Includes...
Capital Region	Goulburn, Yass, Queanbeyan, the Snowy Mountains and the South Coast
Central Coast	Brooklyn, Davistown, Terrigal, The Entrance, Wyong and Gosford
Central West	Bathurst, Lachlan Valley, Lithgow, Mudgee and Orange
Coffs Harbour-Grafton	Coffs Harbour and the Clarence Valley
Far West and Orana	Bourke, Cobar, Coonamble, Broken Hill and Dubbo
Hunter Valley excluding Newcastle	Lower and Upper Hunter, Maitland and Port Stephens
Illawarra	Wollongong, Shellharbour and Kiama
Mid North Coast	Great Lakes, Kempsey, Nambucca, Lord Howe Island, Port Macquarie, Taree and Gloucester
Murray	Upper and Lower Murray, and Albury
Newcastle and Lake Macquarie	Newcastle and Lake Macquarie
New England and North West	Armidale, Inverell, Moree, Inverell, Tenterfield, Moree, Narrabri, Tamworth and Gunnedah
Richmond-Tweed	Richmond Valley and Tweed Valley
Riverina	Griffith, Tumut and Wagga Wagga
Southern Highlands and Shoalhaven	Mittagong, Bowral, Nowra and Ulladulla
Sydney	Sydney and the Blue Mountains